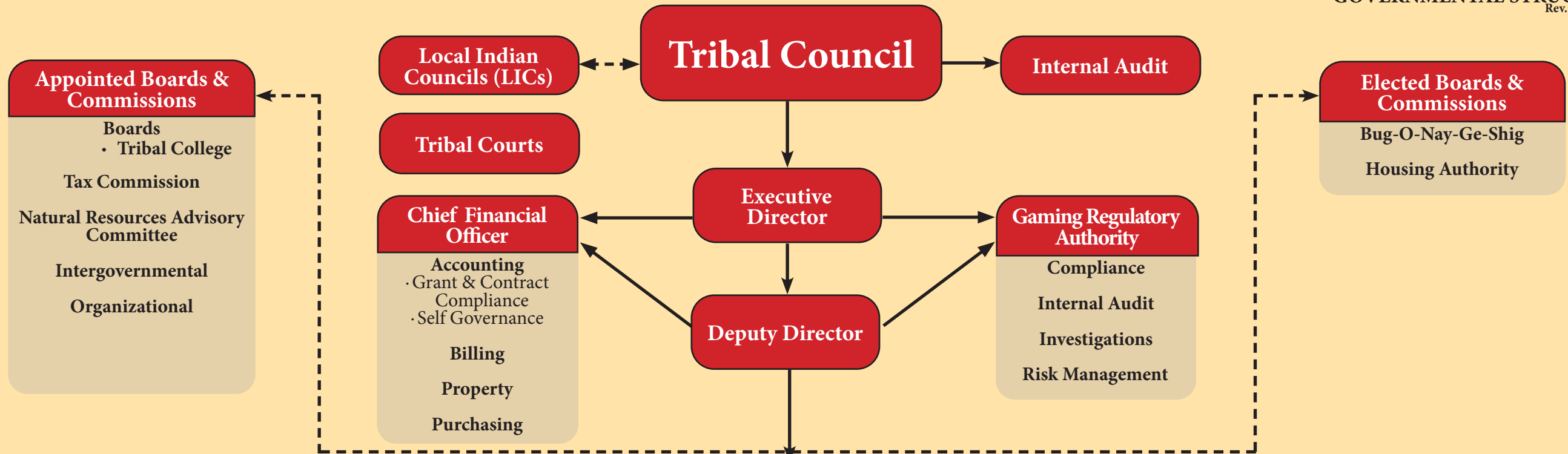


# LEECH LAKE BAND OF OJIBWE

GOVERNMENTAL STRUCTURE  
Rev. 10/12/2023



**Appointed Boards & Commissions**

- Boards
  - Tribal College
- Tax Commission
- Natural Resources Advisory Committee
- Intergovernmental
- Organizational

**Local Indian Councils (LICs)**

**Tribal Courts**

**Chief Financial Officer**

- Accounting
- Grant & Contract Compliance
- Self Governance
- Billing
- Property
- Purchasing

**Tribal Council**

**Internal Audit**

**Executive Director**

**Gaming Regulatory Authority**

- Compliance
- Internal Audit
- Investigations
- Risk Management

**Deputy Director**

**Elected Boards & Commissions**

- Bug-O-Nay-Ge-Shig
- Housing Authority

## Administrative Departments & Programs

**General Administration**

- Child Welfare
- Communications
- Construction
- Energy Assistance
- Enrollment
- Family Spirit
- Fleet Management
- Government Relations
- Homeless Shelter
- Human Resources
- Legal
- Metro Offices
- MIS
- TERO
- Tribal Assistance
- Veterans Services

**Public Works**

- Community Services
- Facilities Mgmt
- Heavy Equipment
- Roads
  - Civil Engineering
  - Road Maintenance
- Sanitation
- Solid Waste
- Small Vehicle Repair
- T.E.P.
- Well & Septic

**Public Safety**

- Community Navigators
- DMV
- Emergency Management
- Fire (Contracts)
- Security
- Tribal Police

**Tribal Development**

- Capital Improvement/Infrastructure
- Economic & Community Development
  - Tourism
- Information Management Office
  - Data Collection
  - Grant Research
  - Grant Writing

**Resource Management**

- Environmental
- Fish Hatchery
- Forest Development & Mgmt
- G.I.S
- Heritage Sites
- Invasive Species Control
- Land Management
- Land Registration Conservation
- Natural Disasters
- Water Resource Mgmt
- Wild Life Enhancement
- Wild Rice
- Wildfire Protection

**A & D**

- AhnjiBeMaDiz Recovery Center
- Adolescent Outpatient
- Assessment Unit
- Family Violence Program
- Mens Outpatient
- Opiate Treatment Program
- SUD Maternal Support
- Women's Services

**Behavioral Health**

- Adult Rehabilitative Mental Health Services
- Child/Adult Mental Health Targeted Case Management
- Children's Therapeutic Services & Supports
- Complimentary & Alternative Medicine
- Crisis Response
- Diagnostic Assessments & Psychotherapy Services
- Early Childhood Mental Health Services
- Holistic Services
- Medication Management Services
- Traditional Healing & Traditional Cultural Advisement

**Health Services**

- Ambulance
- Car Seat Program
- CHR
- Clinical Support
- Clinics
- Courier
- Disease Intervention
- Elder Service/ ENP
- Elder Waiver Program
- Environmental Health
- Fitness Center
- Food Distribution
- Health Admin Team
- Home Health Care
- Maternal Child Health
- Project Development
- SHIP/ Tobacco
- Special Diabetes
- WIC/ Nutrition

**Education**

- Early Childhood
- Gaa-Niigaaniziwaad
- Head Start
- JOM
- K-12
- Post Secondary
- TED/BIE
- Workforce Dev
  - MFIP/NEW
  - WIOA
  - Youth Employment
- YCDPP